

# 3318 22ND STREET

FOR LEASE | RETAIL OPPORTUNITY IN THE MISSION

**TCP**  
**TOUCHSTONE**  
COMMERCIAL PARTNERS



 **Eliopoulos**Group

**CAMERON TU**  
510.919.8193 | [cameron@tcpre.com](mailto:cameron@tcpre.com)

**JARON ELIOPOULOS**  
415.608.6336 | [jaron@tcpre.com](mailto:jaron@tcpre.com)

**VISIT [ELIOPOULOSGROUP.COM](http://ELIOPOULOSGROUP.COM)**



# 3318 22ND STREET

## PROPERTY SUMMARY

### ADDRESS

3318 22nd Street, San Francisco, CA 94110

### AVAILABLE SPACE

+/- 375 Square Feet

### RENTAL RATE

Call Agent For Pricing

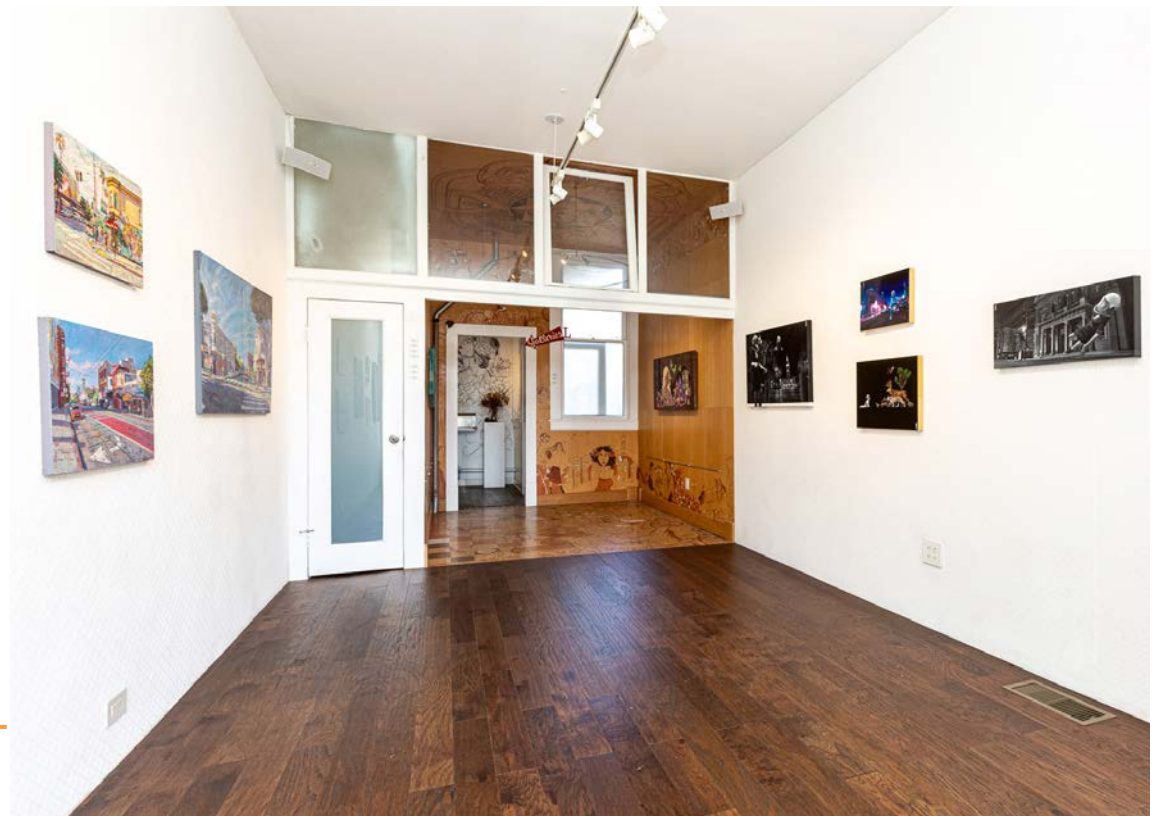
### AVAILABLE

Immediately



## BUILDING ATTRIBUTES

- + High Ceilings
- + Great Natural Light
- + Many Uses Considered
- + Walker's Paradise (99 Walk Score)
- + Excellent Transit (82 Transit Score)
- + Biking Corridor (96 Bike Score)





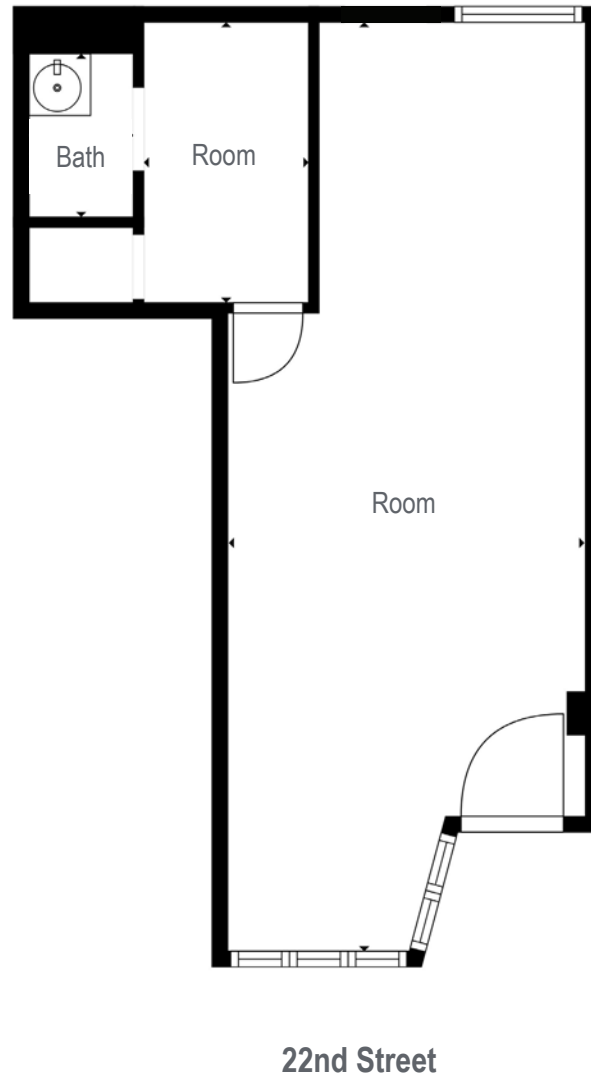
# 3318 22ND STREET



**3318** 22ND  
STREET

## FLOOR PLAN

+/- 375 Square Feet





# 3318 22ND STREET

## LOCATION OVERVIEW

Located in the heart of San Francisco's Mission District, the subject property is well located in a rapidly changing neighborhood.



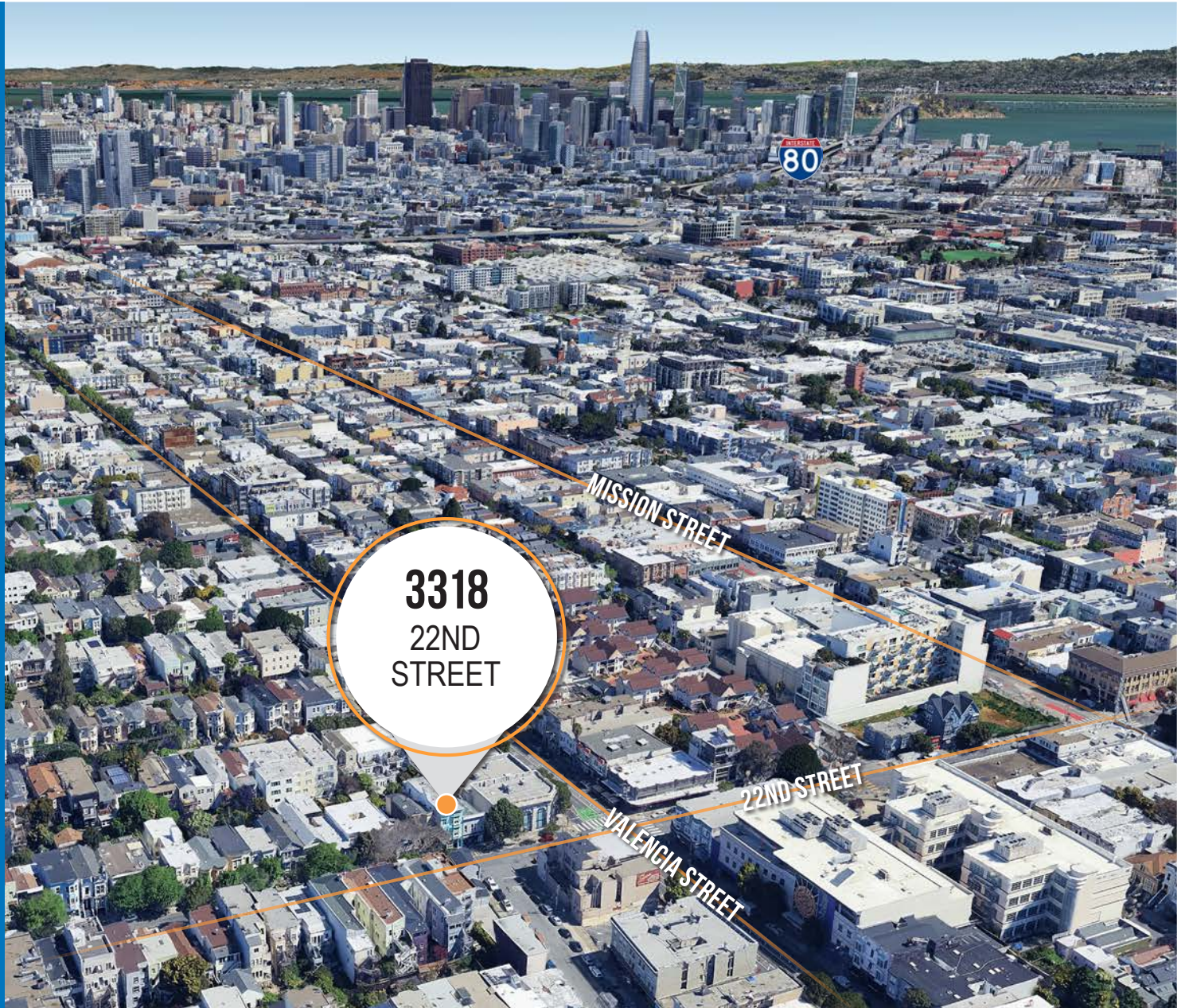
**07 MIN** to 24th Street Bart  
**12 MIN** to Church St Muni  
**10 MIN** to Dolores Park



**09 MIN** to Zuckerberg Hospital  
**15 MIN** to South of Market  
**20 MIN** to Financial District



**07 MIN** to 101 On-Ramp  
**12 MIN** to 280 On-Ramp  
**17 MIN** to 80 On-Ramp

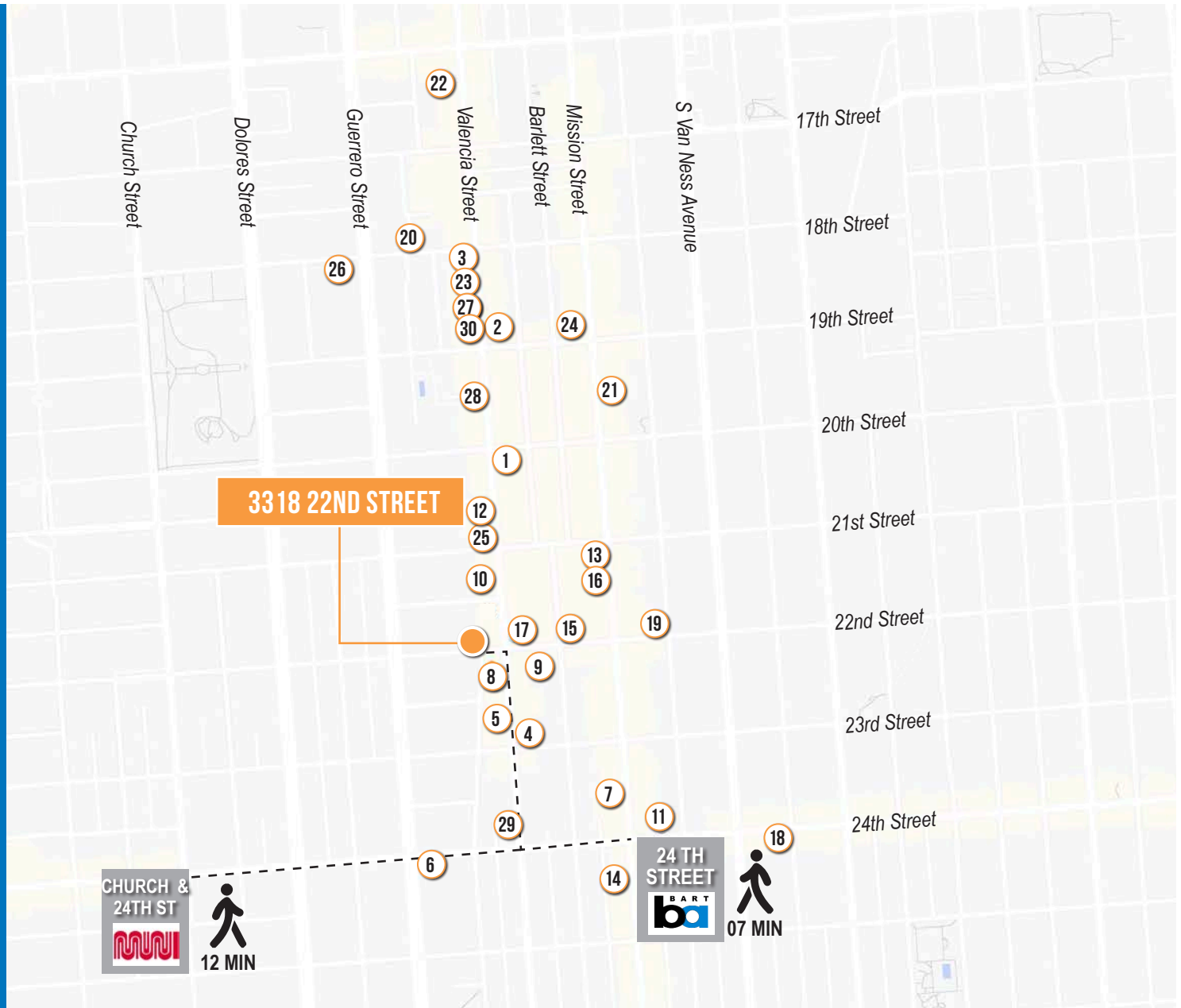




# 3318 22ND STREET

## NEARBY AMENITIES

- 1..... Mixt
- 2..... Curio
- 3..... Yellow Moto
- 4..... Beretta
- 5..... Sanguchon Eatery
- 6..... Fiore Caffe
- 7..... Pollo Campero
- 8..... BOTTEGA
- 9..... Breakfast Little
- 10..... Ritual Coffee Roasters
- 11..... Itria
- 12..... Loló
- 13..... Arcana
- 14..... Rosamunde Sausage Grill
- 15..... Ivory & Vine SF
- 16..... Lolinda
- 17..... Boogaloos
- 18..... DONAJI
- 19..... La Copa Loca Gelato
- 20..... Good Good Culture Club
- 21..... Casements Bar
- 22..... Limón
- 23..... Craftsman and Wolves
- 24..... Lazy Bear
- 25..... Señor Sisig
- 26..... Pizzeria Delphina
- 27..... Soulva
- 28..... The Beehive
- 29..... Arizmendi Bakery
- 30..... Dandelion Chocolate



# 3318 22ND STREET





**3318** 22ND  
STREET



**CAMERON TU** DRE # 02100436  
510.919.8193 | [cameron@tcpre.com](mailto:cameron@tcpre.com)

**JARON ELIOPOULOS** DRE # 01975155  
415.608.6336 | [jaron@tcpre.com](mailto:jaron@tcpre.com)

**VISIT [ELIOPOULOSGROUP.COM](http://ELIOPOULOSGROUP.COM)**

Corp. Lic. 01112906  
[www.tcpre.com](http://www.tcpre.com)

The information presented has been secured from sources we believe to be reliable but we make no representations or warranties, expressed or implied, as to the accuracy of the information. Lessee must verify the information and bears all risk for any inaccuracies.