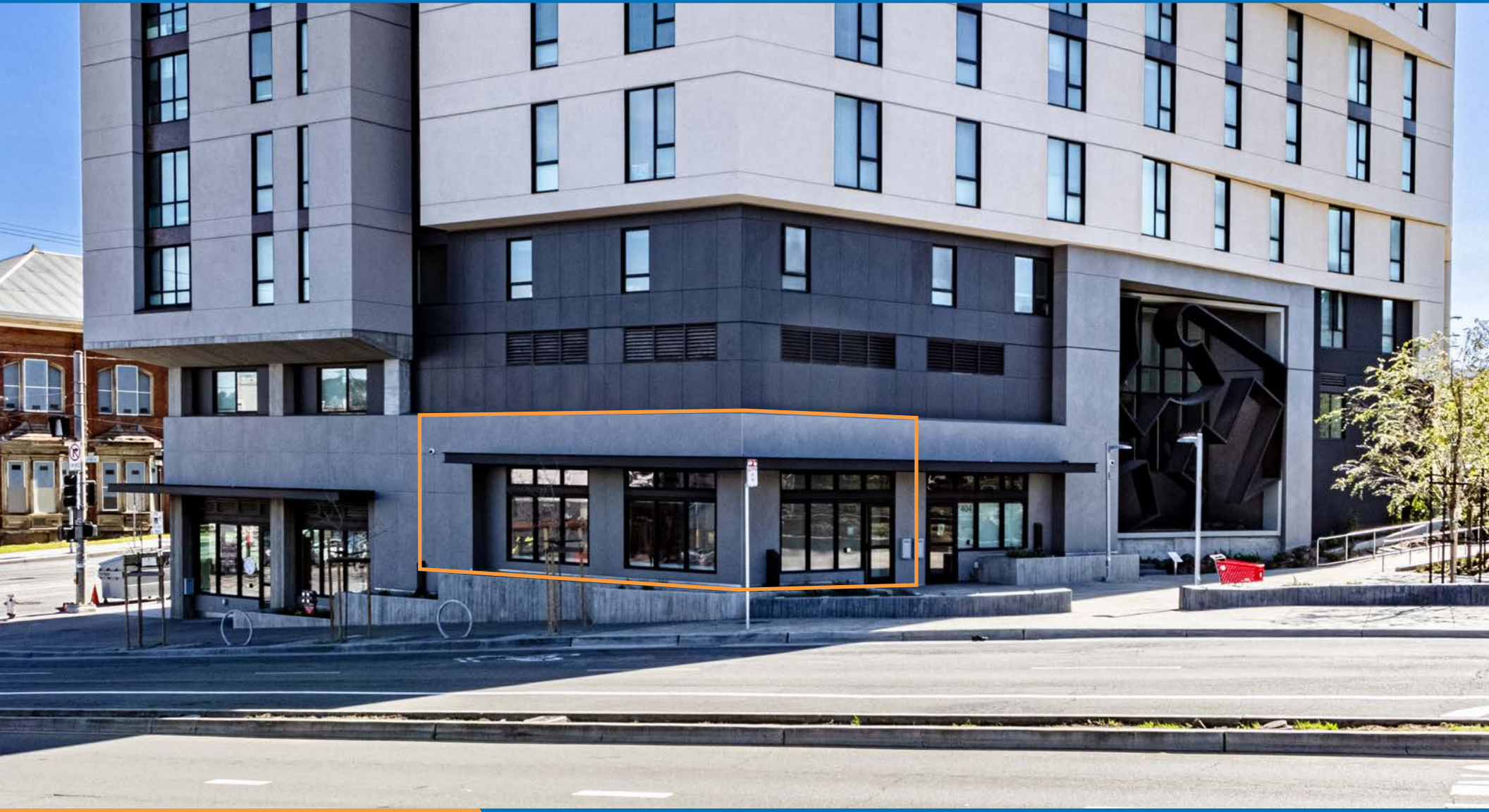


402 GENEVA AVENUE

FOR LEASE | NEWLY DEVELOPED CAFE/RETAIL SPACE

TCP
TOUCHSTONE
COMMERCIAL PARTNERS



402 GENEVA AVENUE

PROPERTY SUMMARY

ADDRESS

402 Geneva Avenue, San Francisco, CA 94112

AVAILABLE SPACE

+/- 1,140 Square Feet

RENTAL RATE

Call Agent For Pricing

AVAILABLE

Immediately

BUILDING ATTRIBUTES

- + Plaza Outdoor Seating
- + Corner Window Exposure
- + ADA Restroom
- + Automatic Blind System
- + HVAC System
- + High Ceilings
- + Steps from San Francisco City College
- + Located at Balboa Park Bart Station Entrance



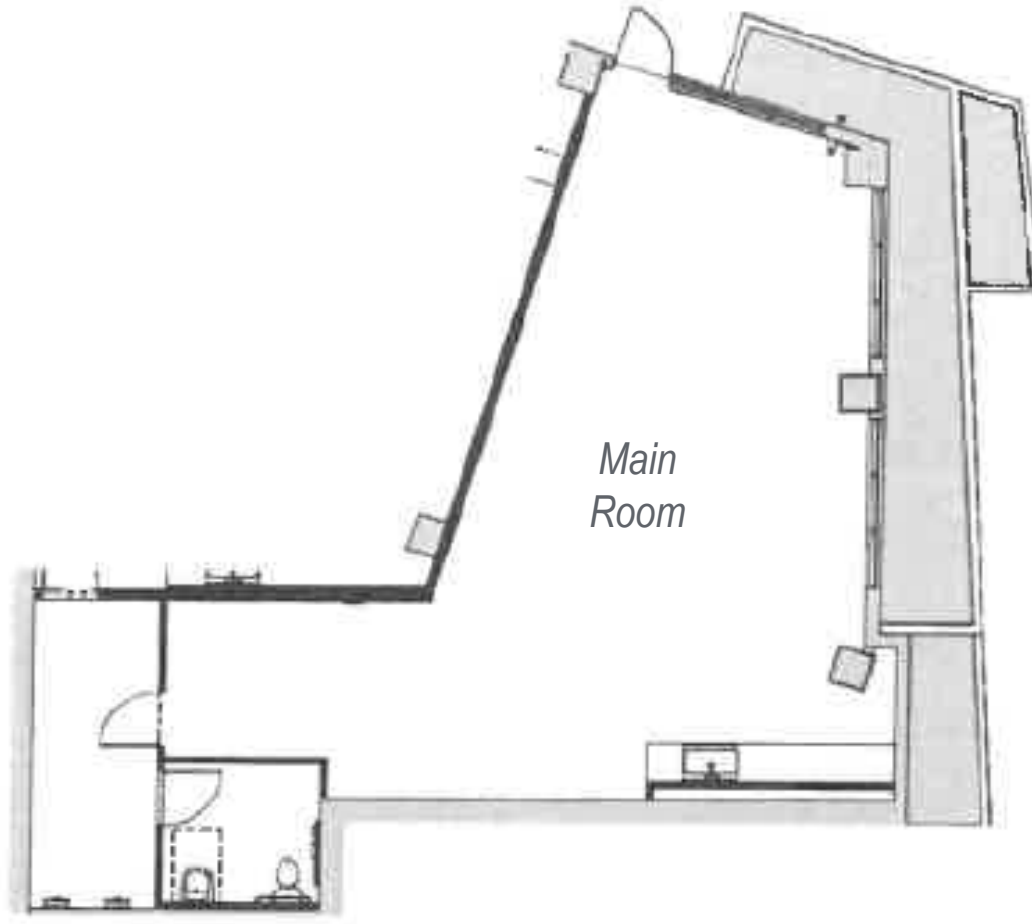
402 GENEVA AVENUE



402 GENEVA AVENUE

FLOOR PLAN

+/- 1,140 Square Feet



Geneva Avenue

402 GENEVA AVENUE

LOCATION OVERVIEW

Located just in the Cayuga Terrace neighborhood of San Francisco. The subject property is well located nearby amenities and public transportation.



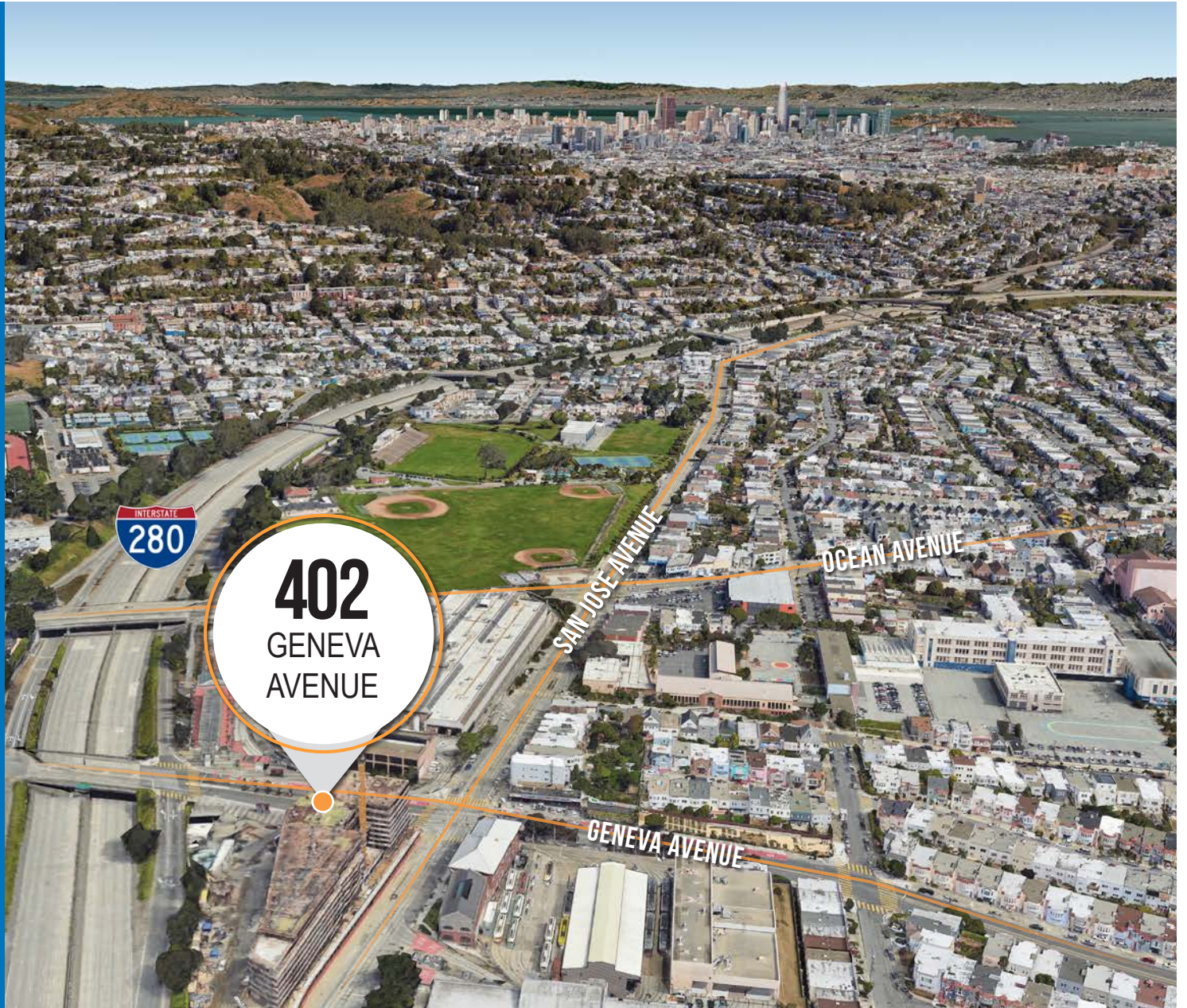
02 MIN to Balboa Park Bart
06 MIN to San Jose Ave Muni
08 MIN to Balboa Park



08 MIN to Noe Valley
12 MIN to SOMA
12 MIN to Mission District



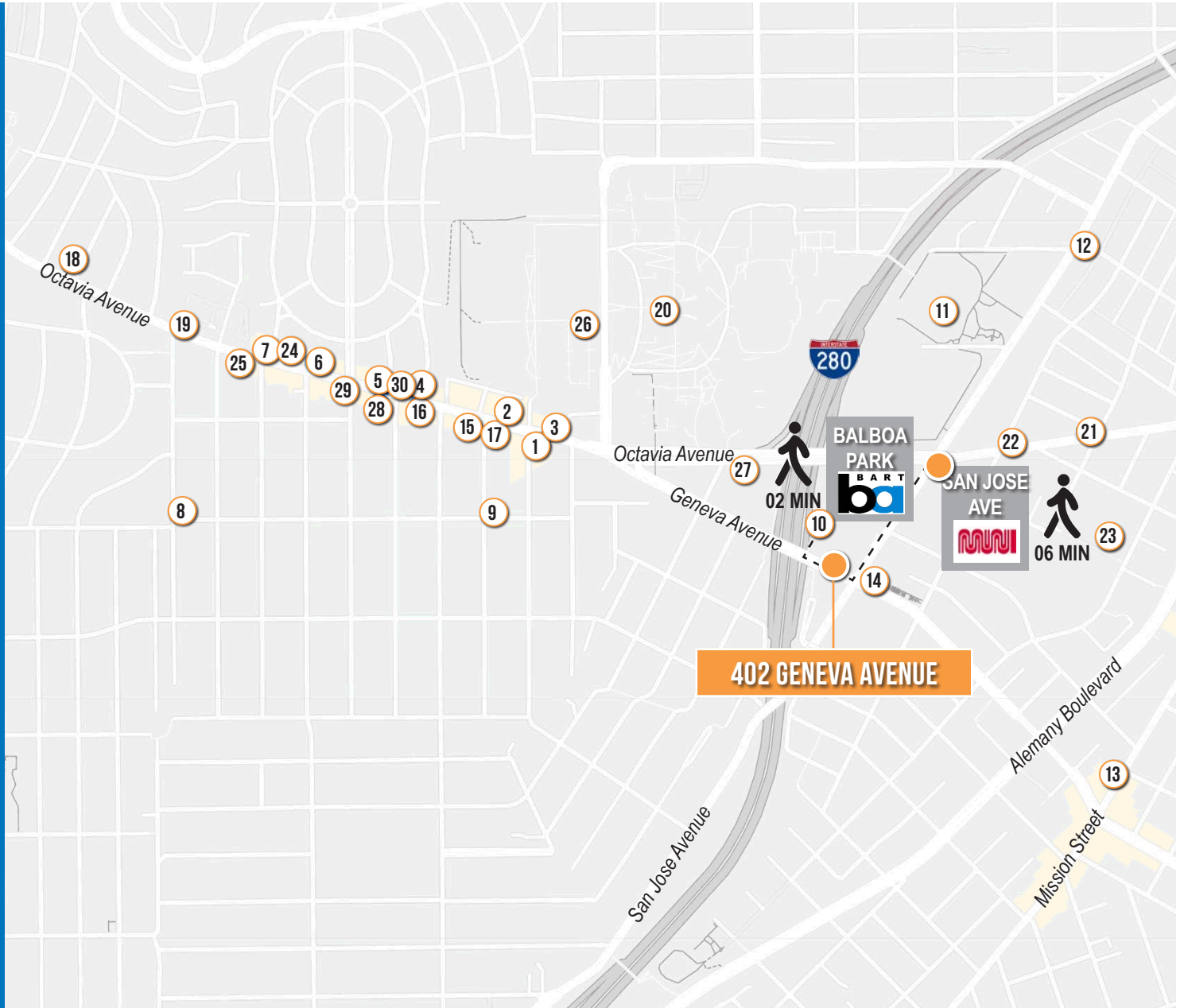
02 MIN to 280 On-Ramp
07 MIN to 101 On-Ramp
10 MIN to 80 On-Ramp



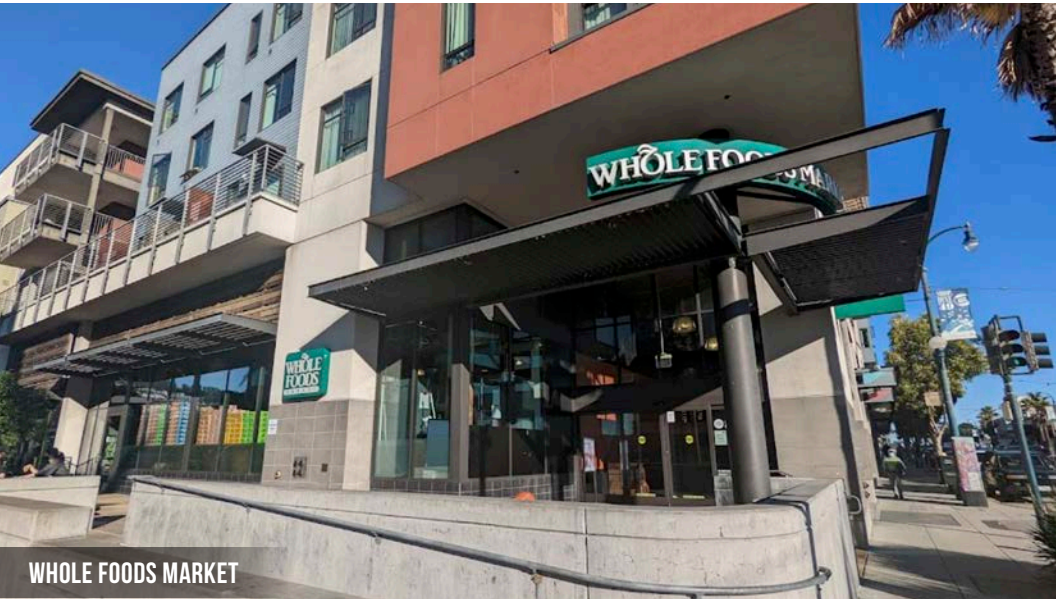
402 GENEVA AVENUE

NEARBY AMENITIES

- 1..... Beep's Burgers
- 2..... Whole Foods Market
- 3..... Philz Coffee
- 4..... Ocean Ale House
- 5..... Sakesan Sushi & Robata
- 6..... Ming Kee Restaurant
- 7..... Java on Ocean
- 8..... Yama Sushi
- 9..... Holloway Market
- 10..... Balboa Park Station
- 11..... Balboa Park
- 12..... Roxie Food Center
- 13..... Rincon Latino Restaurant
- 14..... Turo Cafe and Grill
- 15..... McDonald's
- 16..... Chase Luck Bakery
- 17..... Wells Fargo Bank
- 18..... 7-Eleven
- 19..... 24 Hour Fitness
- 20..... City College of San Francisco
- 21..... Deli Man
- 22..... Far from Paradise Cafe
- 23..... Balboa High School
- 24..... Walgreens
- 25..... A-1 Bakery
- 26..... I Love Pupusas
- 27..... Lick Wilmerding High School
- 28..... Sherwin-Williams Paint Store
- 29..... Lucky Ocean Cafe
- 30..... Dots



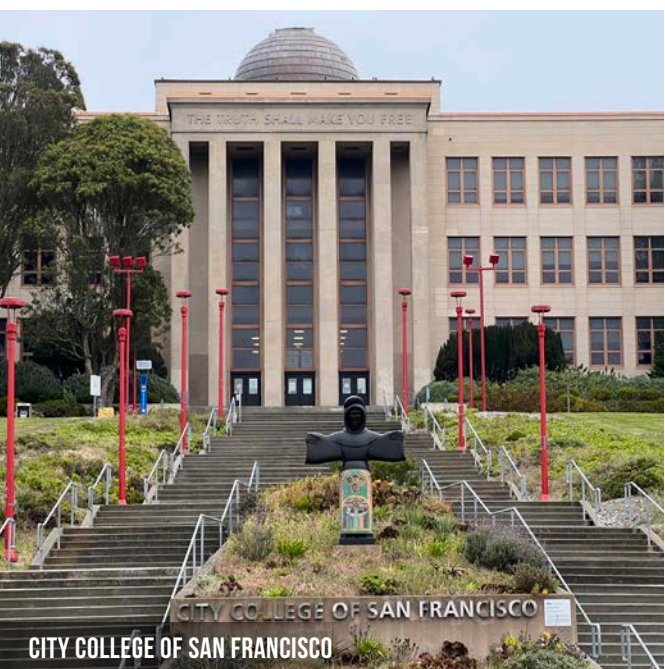
402 GENEVA AVENUE



WHOLE FOODS MARKET



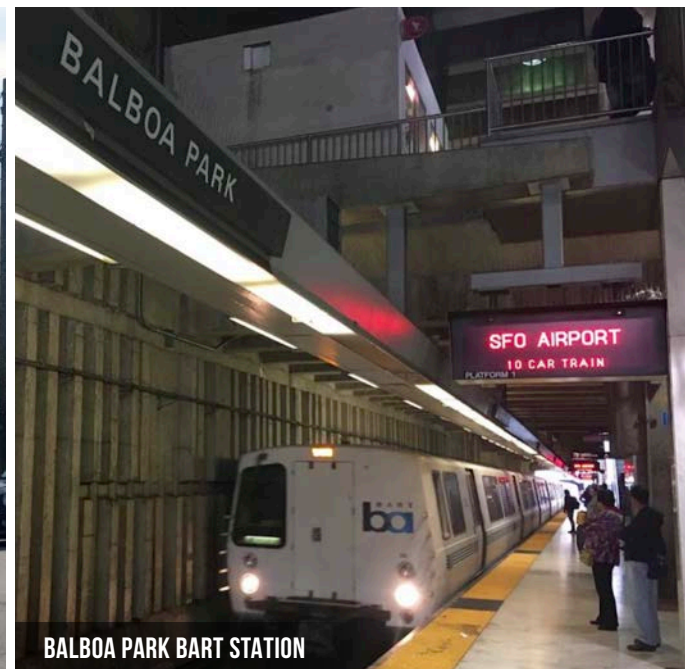
PHILZ COFFEE



CITY COLLEGE OF SAN FRANCISCO



BEEP'S BURGER



BALBOA PARK BART STATION

402 GENEVA
AVENUE



CAMERON TU DRE # 02100436
510.919.8193 | cameron@tcpre.com

JARON ELIOPOULOS DRE # 01975155
415.608.6336 | jaron@tcpre.com

[VISIT ELIOPOULOSGROUP.COM](https://www.eliooulosgroup.com)

Corp. Lic. 01112906
www.tcpre.com

The information presented has been secured from sources we believe to be reliable but we make no representations or warranties, expressed or implied, as to the accuracy of the information. Lessee must verify the information and bears all risk for any inaccuracies.