

# 1728 SACRAMENTO STREET

FOR LEASE | PRIVATE COMMERCIAL / OFFICE SPACE IN POLK GULCH

**TCP**  
**TOUCHSTONE**  
COMMERCIAL PARTNERS



[VISIT ELIOPOULOSGROUP.COM](https://www.eliooulosgroup.com)

 **Eliopoulos**Group

**ETHAN MANN**  
415.990.9127 | [ethan@tcpre.com](mailto:ethan@tcpre.com)

**GEORGE FARLEY**  
415.994.5767 | [george@tcpre.com](mailto:george@tcpre.com)

**JARON ELIOPOULOS**  
415.608.6336 | [jaron@tcpre.com](mailto:jaron@tcpre.com)

# 1728 SACRAMENTO STREET

## PROPERTY SUMMARY

### ADDRESS

1728 Sacramento Street, San Francisco, CA 94109

### AVAILABLE SPACE

+/- 534 Square Feet

### RENTAL RATE

\$1,500 / Month, Industrial Gross

### AVAILABLE

Immediately

## BUILDING ATTRIBUTES

- + Former Salon Space
- + Multiple Private Rooms
- + Restroom With Shower





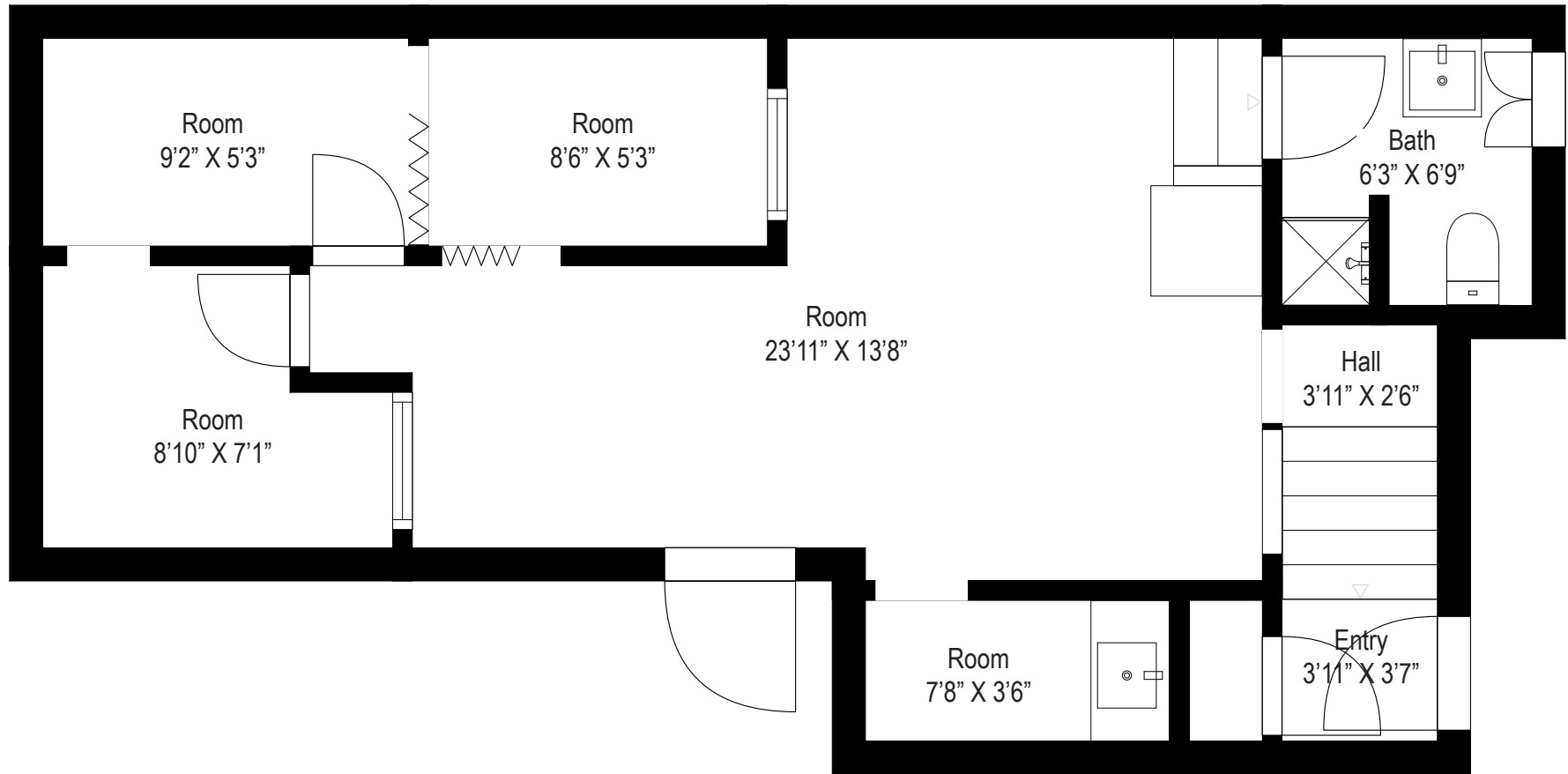
# 1728 SACRAMENTO STREET



# 1728 SACRAMENTO STREET

## FLOOR PLAN

Total Space: +/- 534 Square Feet





# 1728 SACRAMENTO STREET

## LOCATION OVERVIEW

This property is located in the Polk Gulch neighborhood in the San Francisco Bay Area. The subject property is well located in a rapidly changing neighborhood.



**02 MIN** to Van Ness Ave Muni  
**06 MIN** to Lafayette Park  
**27 MIN** to Powell Street Bart



**07 MIN** to Union Square  
**08 MIN** to South of Market  
**11 MIN** to Mission District



**07 MIN** to 101 On-Ramp  
**16 MIN** to 80 On-Ramp  
**17 MIN** to 280 On-Ramp



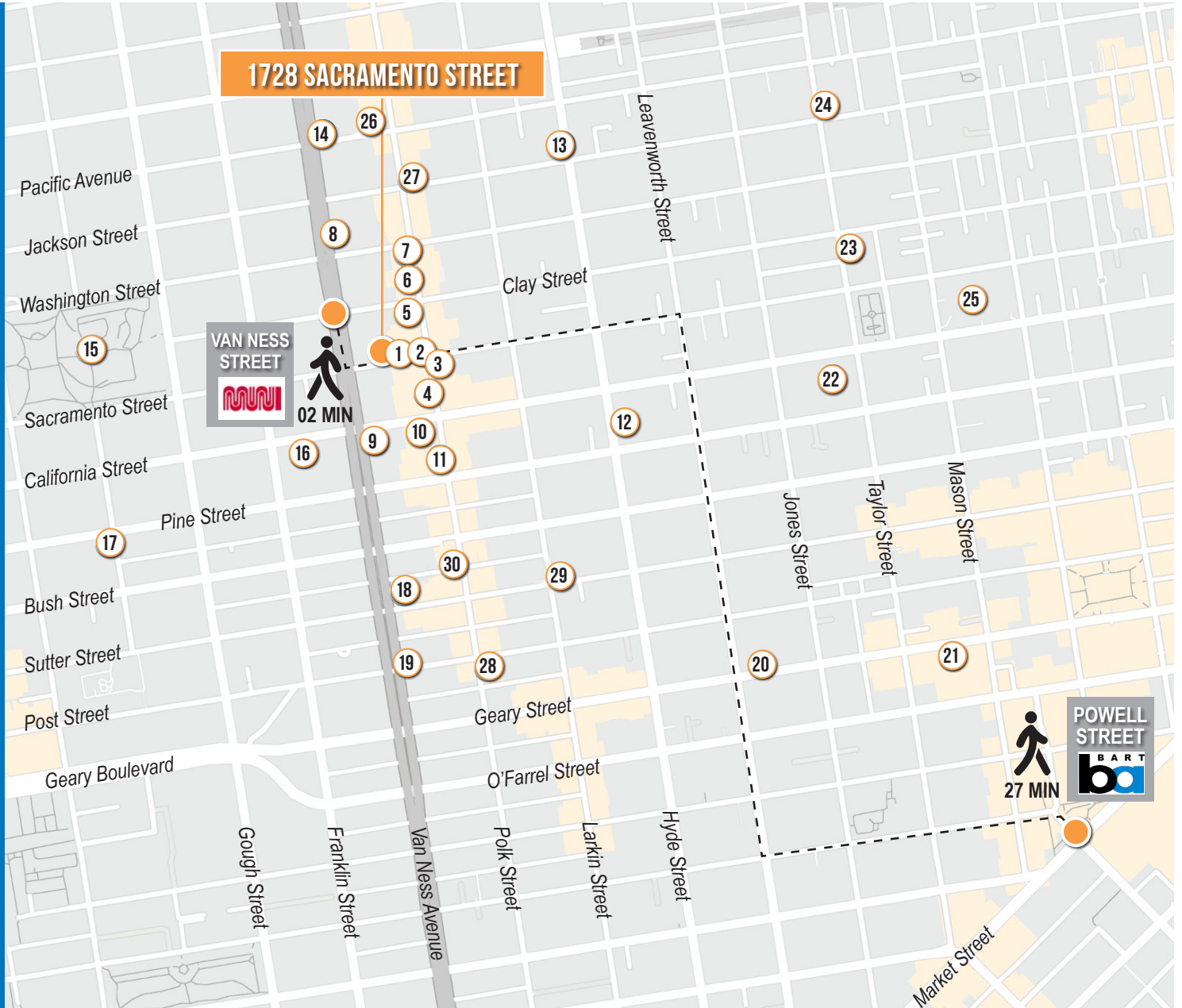
**1728**  
**SACRAMENTO**  
**STREET**



# 1728 SACRAMENTO STREET

## NEARBY AMENITIES

- 1..... Acquerello
- 2..... Toast Eatery
- 3..... Common Sage
- 4..... Ora Wine bar
- 5..... Harper & Rye
- 6..... The Cinch Saloon
- 7..... The Crepe House
- 8..... House of Prime Rib
- 9..... Starbucks
- 10..... Crustacean Restaurant
- 11..... Hi-Lo Club
- 12..... Nourish Cafe
- 13..... Cocotte
- 14..... Harris' Restaurant
- 15..... Lafayette Park
- 16..... Whole Foods Market
- 17..... Stuart Hall High School
- 18..... The Regency Ballroom
- 19..... 24 Hour Fitness
- 20..... Mensho Tokyo SF
- 21..... The Curran Theatre
- 22..... SF Masonic Auditorium
- 23..... Nob Hill Cafe
- 24..... Cafe Isabella
- 25..... Tonga Room & Hurricane Bar
26. Clay By The Bay Pottery Studios
- 27..... Bell Tower
- 28..... Kuma Sushi + Sake
- 29...halal DASTARKHAN restaurant
- 30..... Mayes Oyster House





# 1728 SACRAMENTO STREET



LAFAYETTE PARK



HOUSE OF PRIME RIB



ACQUERELLO



NOB HILL CAFE



HARRIS RESTAURANT



1728 SACRAMENTO STREET



VISIT ELIOPOULSGROUP.COM



**ETHAN MANN** BRE # 02223262  
419.990.9127 | ethan@tcpre.com

**GEORGE FARLEY**  
415.994.5767 | george@tcpre.com

**JARON ELIOPOULOS** DRE # 01975155  
415.608.6336 | jaron@tcpre.com

Corp. Lic. 01112906  
www.tcpre.com

The information presented has been secured from sources we believe to be reliable but we make no representations or warranties, expressed or implied, as to the accuracy of the information. Lessee must verify the information and bears all risk for any inaccuracies.