

**TCP**  
TOUCHSTONE  
COMMERCIAL PARTNERS

# 2701-2737 TAYLOR STREET

FOR LEASE | RETAIL / SHOWROOM SPACES - FISHERMAN'S WHARF

**PROMO  
RATE!**  
Months 1-5



**JARON ELIOPOULOS**

415.608.6336 | [jaron@tcpre.com](mailto:jaron@tcpre.com)

**CAMERON TU**

510.919.8193 | [cameron@tcpre.com](mailto:cameron@tcpre.com)



# 2701-2737 TAYLOR STREET

## PROPERTY SUMMARY

### ADDRESS

2701-2737 Taylor Street, San Francisco, CA 94133

### AVAILABLE SPACE

2701 Taylor St: +/- 781 Square Feet + Mezzanine  
2737 Taylor St: +/- 1,090 Square Feet

### PROMO RATE

Months 1-2: Free Rent  
Month 3: \$2,000 Per Month, IG  
Month 4: \$3,000 Per Month, IG  
Month 5: \$4,000 Per Month, IG  
Months 6-12: \$5,000 Per Month, IG

### AVAILABLE

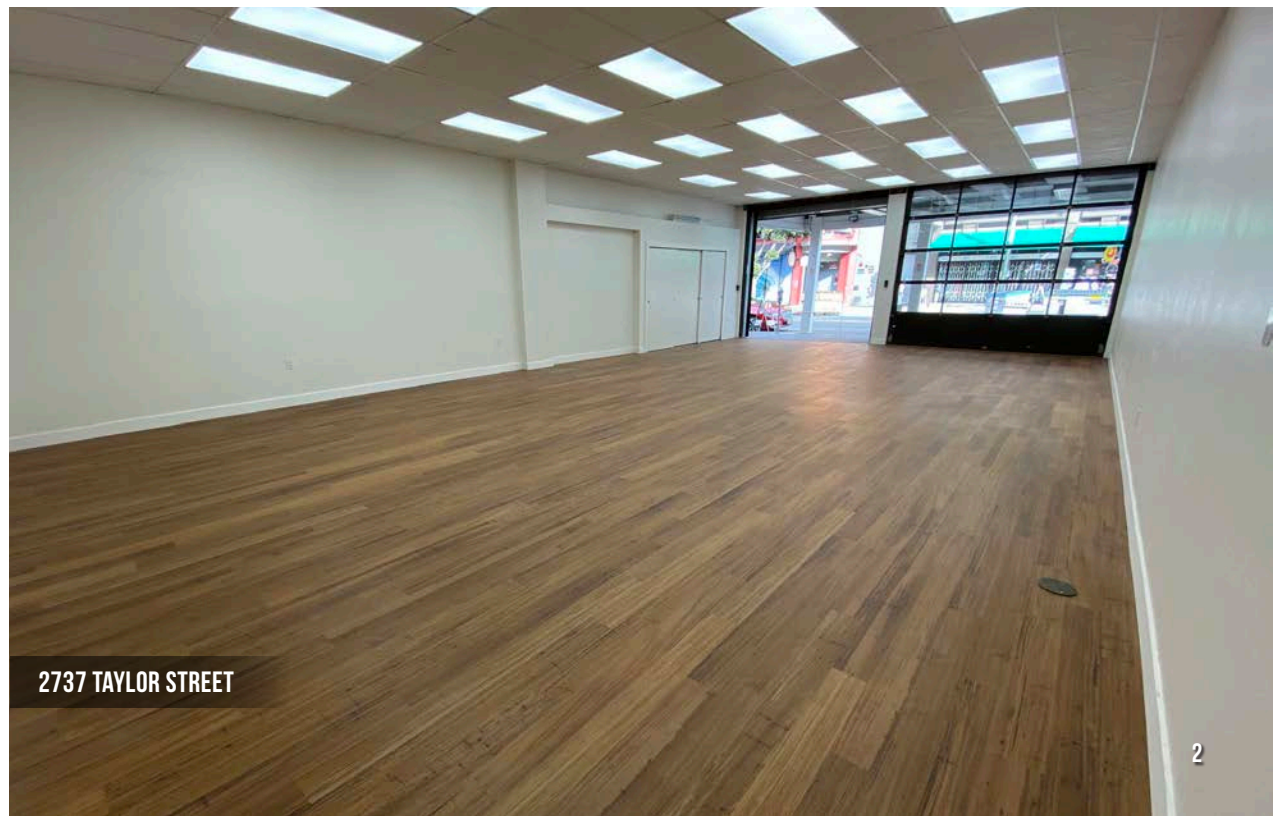
Immediately

## BUILDING ATTRIBUTES

- + Heavy Foot Traffic
- + Strong Tourist Presence
- + Two (2) Roll Up Doors (Unit 2737)
- + Newly Renovated (Unit 2737)
- + Common Area ADA Restrooms
- + Delivery Corridor
- + Corner Unit With Significant Glass and Signage (Unit 2701)



2701 TAYLOR STREET



2737 TAYLOR STREET



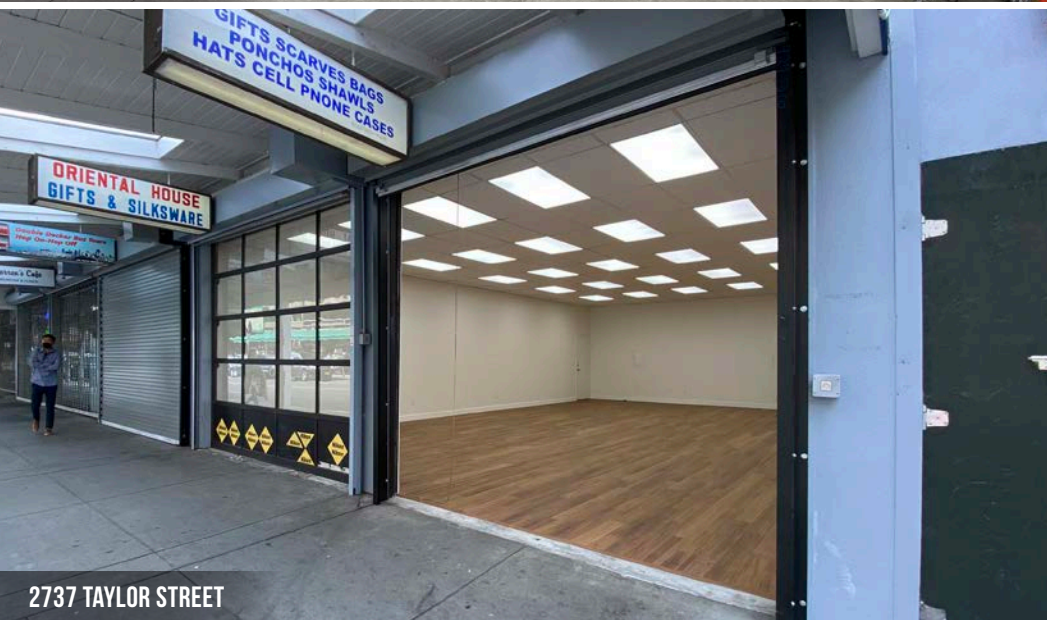
# 2701-2737 TAYLOR STREET



2701 TAYLOR STREET



2701 TAYLOR STREET



2737 TAYLOR STREET



2737 TAYLOR STREET



# 2701-2737 TAYLOR STREET

## LOCATION OVERVIEW

Desirable Fisherman's Wharf location, walkable to nearby amenities, public transportation and to surrounding neighborhoods,.



- 05 MIN to Fisherman's Wharf
- 08 MIN to North Beach
- 09 MIN to Pier 39
- 15 MIN to Chinatown



- 06 MIN to Financial District
- 13 MIN to Golden Gate Bridge
- 16 MIN to Union Square



- 10 MIN to 80 On-Ramp
- 14 MIN to 280 On-Ramp
- 16 MIN to 101 On-Ramp

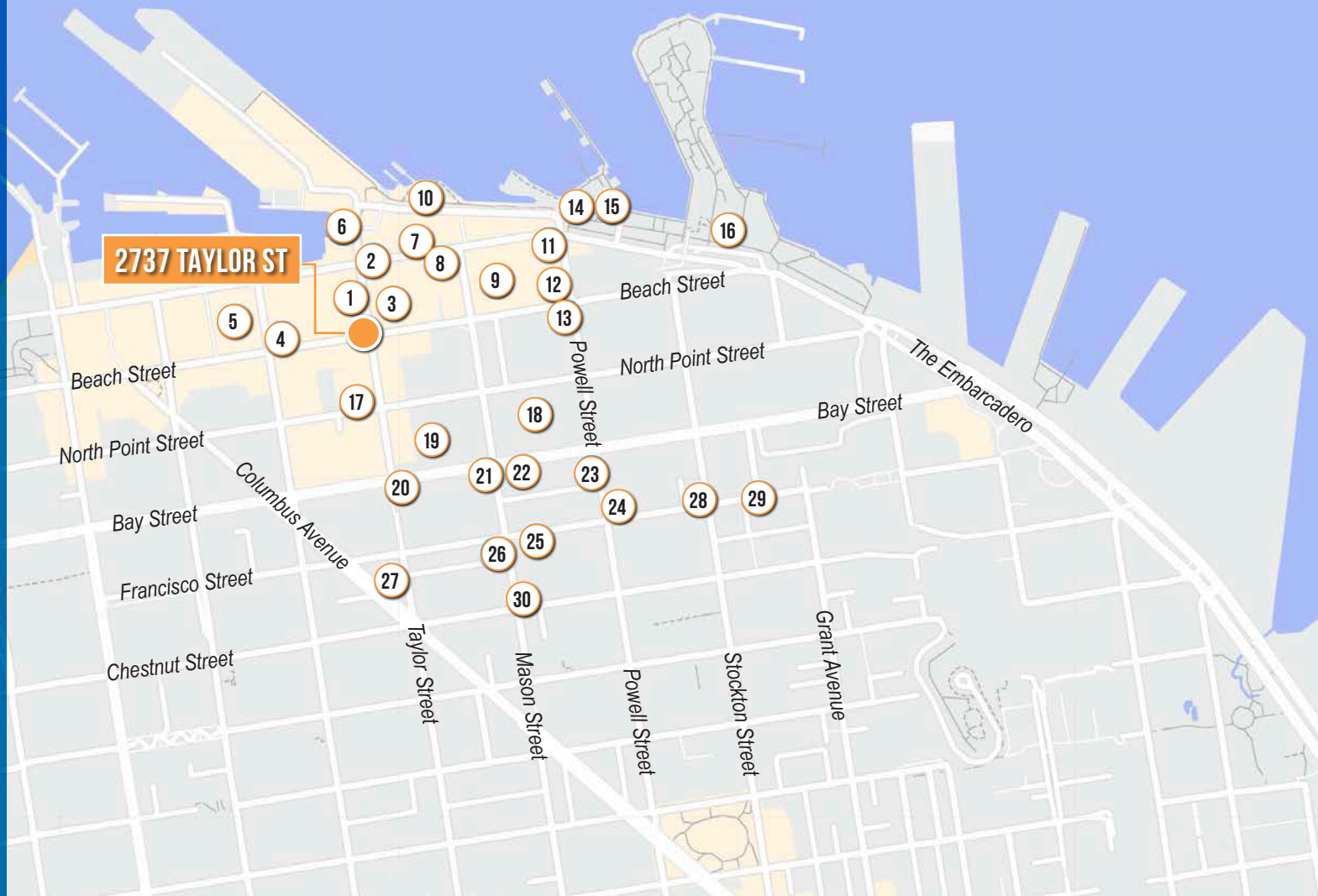




# 2701-2737 TAYLOR STREET

## NEARBY AMENITIES

- 1..... ZK Gallery
- 2..... Fisherman's Wharf Chowder
- 3..... Applebee's Grill + Bar
- 4..... The Codmother Fish and Chips
- 5..... In-N-Out Burger
- 6..... Alioto's Restaurant
- 7..... Boudin Bakery & Cafe
- 8..... McDonald's
- 9..... 7-Eleven
- 10..... Franciscan Crab Restaurant
- 11..... CVS
- 12..... IHOP
- 13..... Starbucks
- 14..... Pier 41 Marine Terminal
- 15..... Ben & Jerry's
- 16..... PIER 39
- 17..... Hollywood Cafe
- 18..... Safeway
- 19..... Ross Dress for Less
- 20..... Starbucks
- 21..... Trader Joe's
- 22..... Goodfellas Pizzeria
- 23..... Burger Shack
- 24..... USPS North Beach Annex
- 25..... Sweetie's Art Bar
- 26..... Cilantro SF Taqueria
- 27..... Kennedy's Indian Curry House
- 28..... Freddie's Sandwiches
- 29..... Seven Stones Winery
- 30..... Caffe Capriccio





# 2701-2737 TAYLOR STREET





2701-2737 TAYLOR STREET



**TCP**  
**TOUCHSTONE**  
COMMERCIAL PARTNERS

Corp. Lic. 01112906  
www.tcpre.com

**JARON ELIOPOULOS** DRE # 01975155  
415.608.6336 | jaron@tcpre.com

**CAMERON TU** DRE # 02100436  
510.919.8193 | cameron@tcpre.com

The information presented has been secured from sources we believe to be reliable but we make no representations or warranties, expressed or implied, as to the accuracy of the information. Lessee must verify the information and bears all risk for any inaccuracies.